



Manawatu Show

Boys & Girls Schedule of Classes



Manawatu & West Coast A & P Association

137th ANNUAL SHOW

Saturday 4th November 2023

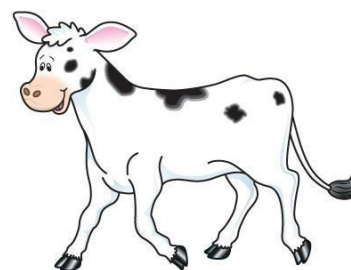


Postal PO Box 501, Feilding 4740 • **Physical Address** Manfeild Events Centre, 59 South Street, Feilding 4702
• **Phone** (06) 323 1886 • **Email** showmanawatuAP@gmail.com • **website** www.manawatushow.co.nz **fb** manawatuaandp

Chief Steward – Ash Hazlitt

Ph: 027 246 6559

CENTURY 21®



If anyone would be interested in a Secondary School Section please inform the office ASAP

Please Scan and Email entries to: showmanawatuap@gmail.com

Or post to: Manawatu A&P, P O Box 501, Feilding 4702

Please Make Payments to:

Manawatu & West Coast A&P Association – 02-0727-0033284-00

Particulars (Surname) Reference (Boys and Girls)

CALVES

STADIUM - starting at 10.30am

- (Entry Form at rear of this Schedule or online at www.manawatushow.co.nz; or f=manawatuaandp)
- **Entries will also be taken on the day, in the stadium, from 9.00am.**
- Entry Fee: \$5.00 per child (irrespective of number of classes).
- Prize Money: **1st \$10 2nd \$8 3rd \$6 4th \$4 5th \$2**

NB - These classes are NOT conducted under the regulations governing Calf Club competitions at schools.

A child shall not exhibit more than one animal in any class in this section.

The Champion and Reserve Champion Calf for which the Association's sashes will be awarded will be judged from calves placed 1st and 2nd in their classes:

SECTION A – Open to Exhibitors years one to five

7606 Best Turned Out Calf, appearance of Calf and Child to be judged

7608 Best Led Calf

SECTION B – Open to Exhibitors years six to eight

7620 Best Turned out Calf, appearance of Calf and Child to be judged

7622 Best Led Calf

TYPE CLASSES – Sections A and B combined

7624 Best Light Breeds Calf

7626 Best Heavy Breeds Calf

7628 Best Beef Calf

CHAMPION & RESERVE CHAMPION CALF, Section A

CHAMPION & RESERVE CHAMPION CALF, Section B

PET LAMBS - SATURDAY 4th November – STADIUM - starting at 11.00am

SPONSORED

SPECIAL AWARDS

Junior Pet Lamb Perpetual Trophy donated by

Senior Pet Lamb Perpetual Trophy donated by the **Association**.



General:

- Please register in the stadium from 9.00am for judging at 11.00am
- 3 Classes Compete for Championship Points (Decorated Lamb class not eligible)
- Children are divided into 2 age groups, depending on entries.
- Entry Fee: \$5.00 per child (irrespective of number of classes).

Points: 1st 2nd 3rd 4th

4300 Junior Best Led Lamb

4302 Junior Best in Calling

4304 Junior Best Lamb in Wool, Care and Attention

4306 Junior Best Decorated Lamb

Points: 1st 2nd 3rd 4th

4308 Senior Best Led Lamb

4310 Senior Best in Calling

4312 Senior Best Lamb in Wool, Care and Attention

CHAMPION & RESERVE JUNIOR PET LAMB

CHAMPION & RESERVE SENIOR PET LAMB

PET GOATS - SATURDAY 4th November – STADIUM - starting at 11.00am

Please register in the stadium from 9.00am for judging at 11.00am

General:

- Please register in the stadium from 9.00am for judging at 11.00am
- 3 Classes Compete for Championship Point (Decorated Goat class not eligible Children are divided into 2 age groups, depending on entries.
- Entry Fee: \$5.00 per child (irrespective of number of classes).



Points: 1st 2nd 3rd 4th .

4308 Best Led Goat

4310 Best in Calling

4312 Best Goat in Care and Attention

CHAMPION JUNIOR PET GOAT

CHAMPION SENIOR PET GOAT





Boys' & Girls' Classes

Name:

Address:

Phone: E-mail:

Class no.	Animal's Dob	Animal's name	Exhibitor's name	Entry fee
total				

\$5.00 per child (irrespective of number of classes).

We accept that by entering these classes, we agree to abide by the show rules; and the Health and Safety rules and policies of the Manawatu West Coast A&P Association. We also agree to indemnify the Association against any claim for accident, injury or contact with a contagious or infectious disease occurring while competing at the show, or on the grounds; and to the best of our knowledge our animal(s) are free of any contagious or infectious disease.

Signed _____ (Parent or Guardian, 18 years & over)